



FMW Web

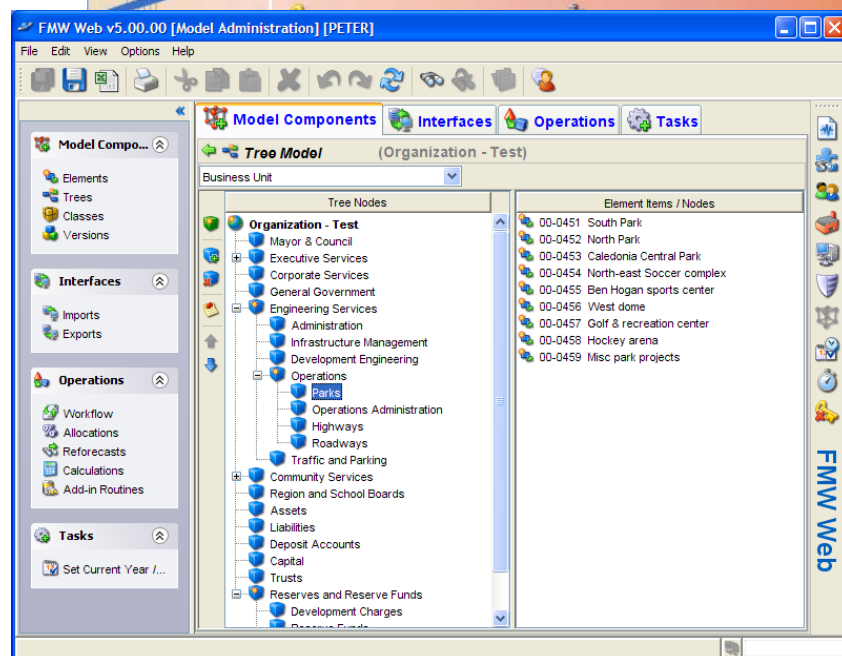
Financial Manager's Workbench - Web edition

FMW Model Administration is used to define the elements of the budgeting or reporting processes for which FMW Web is being utilized. It is highly flexible and includes a set of user-friendly graphical tools with which to manipulate various elements of the model.

Dealing with the complexity of real-world requirements.

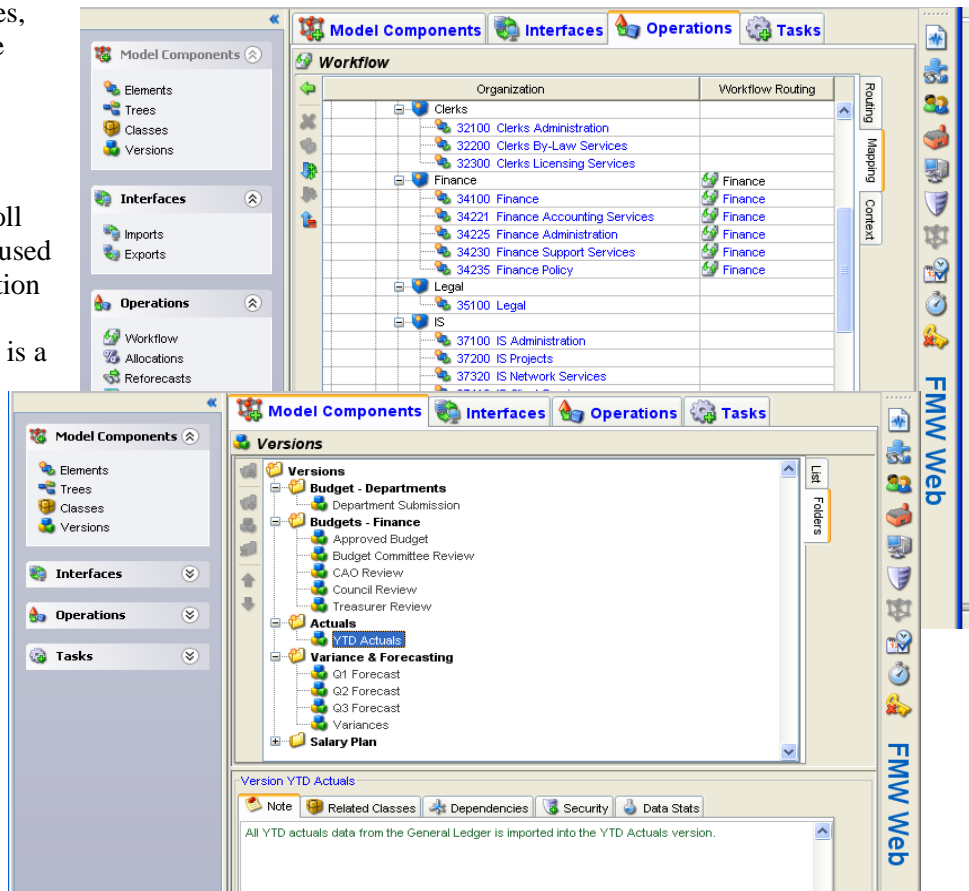


Budgeting and planning processes are highly variable, and methodologies and objectives vary significantly between industry sectors and even between different organizations within a sector. FMW Model Administration is at the core of the FMW Web suite, and allows the accurate modeling of a variety of data structures and budget processes. Any chart of accounts can be accommodated, as well as other data structures such as job or equipment costing, detailed payroll data or any other data structure that might be pertinent to the budgeting and reporting processes.



Key Features

- **Graphical tools.** Easy to use graphical tools to maintain components such as elements, trees and versions.
- **Unlimited.** Any number of elements, versions, views, reporting trees and other model components may be defined to model multiple processes.
- **Elements.** Elements (departments, accounts, jobs etc.) are unlimited in number, fully user defined and can incorporate advanced features such as tracking of item changes, display reordering and the ability to disable specific items.
- **Trees.** Trees provide a powerful mechanism to roll up element items and are used extensively for data selection in views, analysis and reporting. The tree editor is a two-pane “explorer-style” window that allows easy reorganization through a drag-and-drop mechanism.
- **Views.** User defined Views allow data to be presented to the user for editing in a variety of useful ways. View templates include the definition of formats, selection criteria, subtotalling, calculations and comparative data.
- **Tracking Changes.** Tracking model component changes, such as element item and tree node changes is available.
- **Workflow.** A multi-level workflow system, including a highly graphical control panel and selective promotions and demotions, allows budget administrators to exercise comprehensive control over the budgeting process.
- **Audit Trail.** A full audit trail is available for every data change made. Data change tracking can optionally be switched off for specific versions, such as data directly imported into a version from other systems.
- **Operations.** Allocations, calculations and re-forecasts provide users and managers with additional budgeting tools, to further facilitate the budget process.



RAC SOFTWARE INC.

1540 Cornwall Rd.
 Suite 215
 Oakville, ON, Canada
 L6J 7W5
 Phone: 905-842-7100
 Email: racsales@racsoft.com
www.racsoft.com